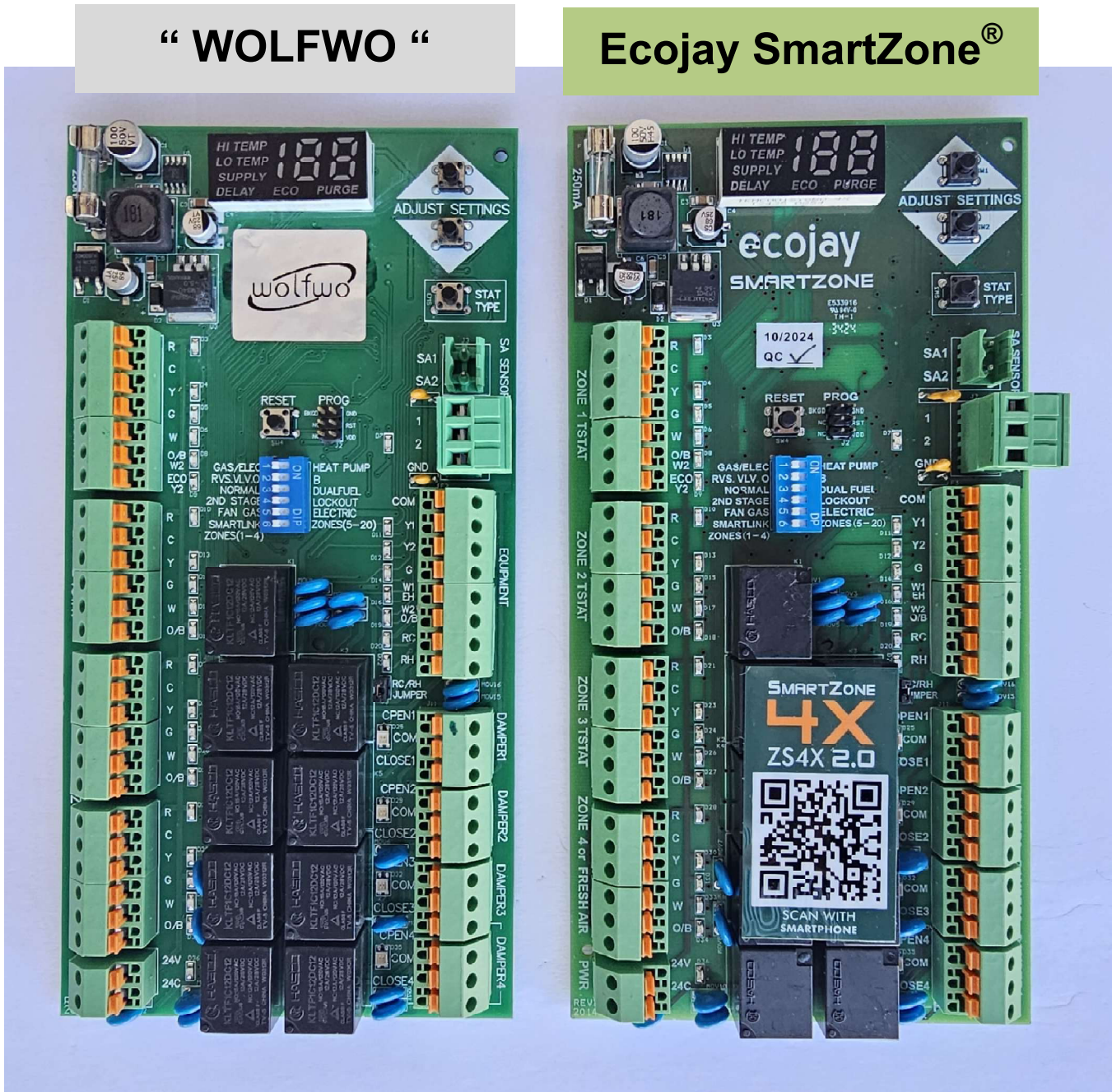


This document provides a visual comparison between an original Ecojay SmartZone product and an unauthorized product sold under the brand name “WolfWo” on Amazon (ASIN: B0DZ6GRHSS).

The purpose of this comparison is to demonstrate the unauthorized reproduction of copyrighted visual and expressive elements authored by Ecojay, including display text and layout, printed circuit board (PCB) silkscreen text and graphics, and product documentation.

The similarities shown below extend beyond functional or industry-standard features and reflect direct copying of original creative expression.

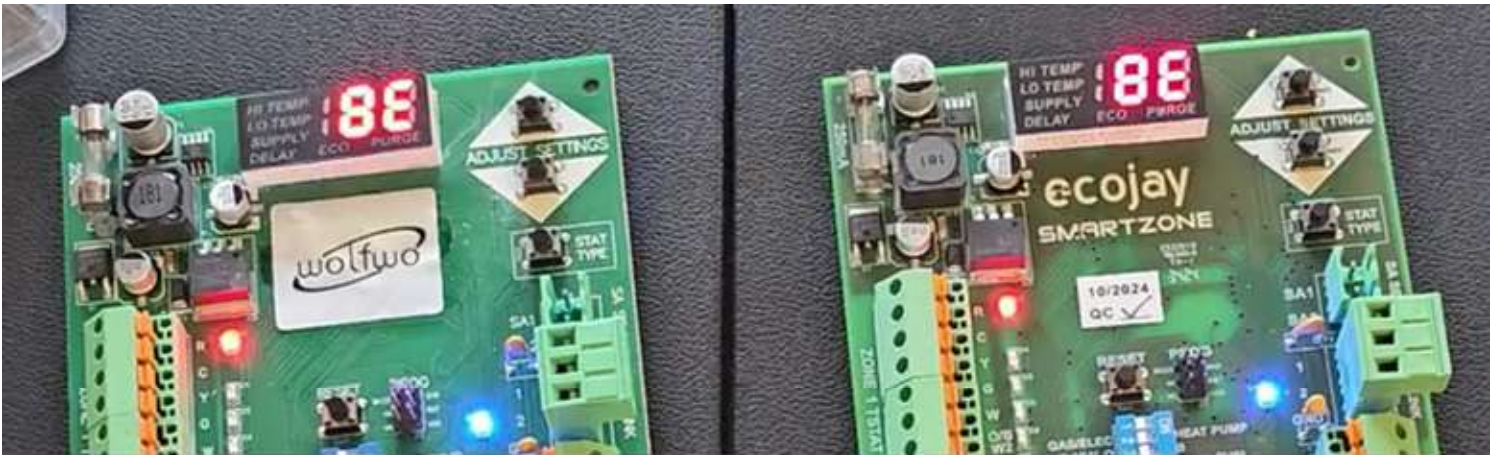
For each comparison, the Ecojay SmartZone product is shown on the RIGHT and the WolfWo product is shown on the LEFT. Identical or substantially similar text, layouts, and visual elements are highlighted to illustrate unauthorized copying.



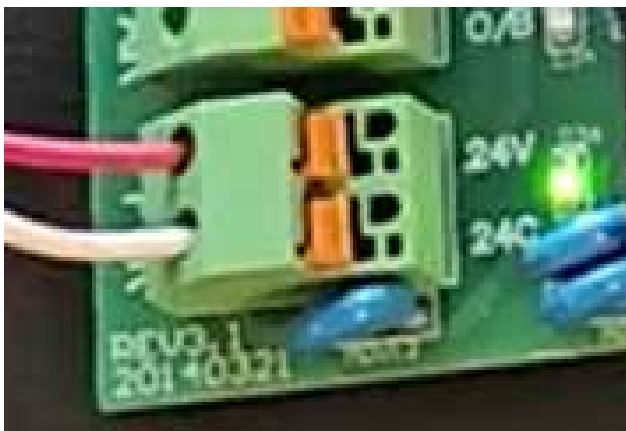
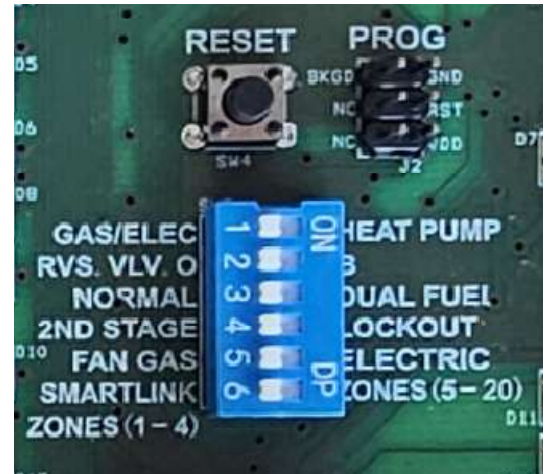
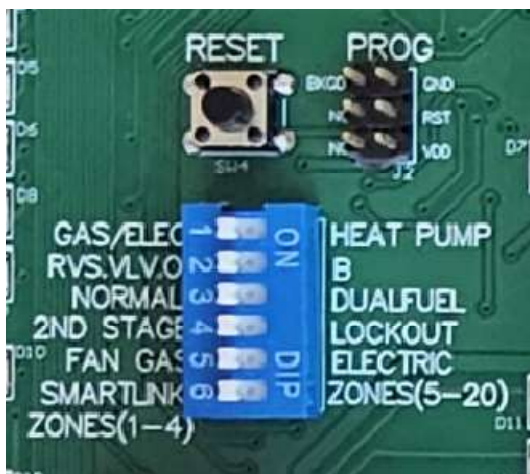
The WolfWo product reproduces the same display text, screen layout, and visual arrangement as the Ecojay SmartZone, including wording and positioning not required for functional operation.

“ WOLFVO “

Ecojay SmartZone®



The WolfWo product displays identical startup text and screen formatting originally authored for the Ecojay SmartZone product.

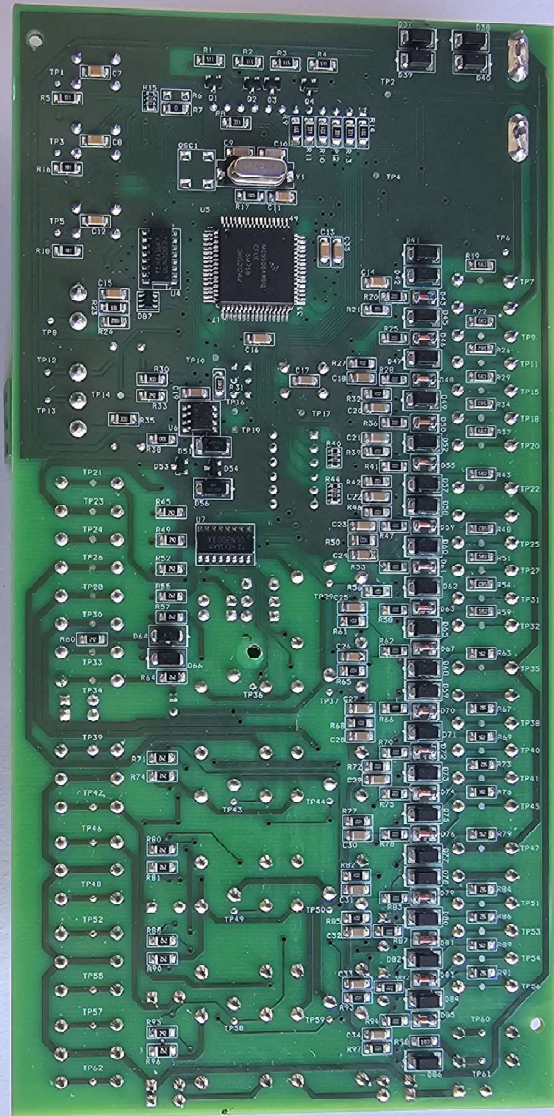
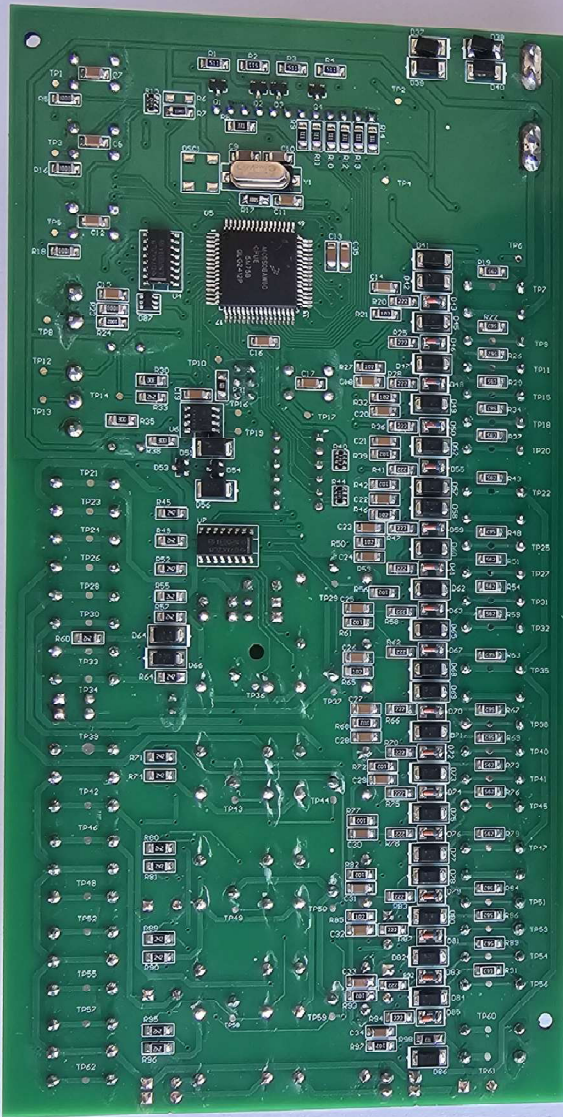


The PCB silkscreen on the WolfWo product reproduces the same text labels, phrasing, and placement as the Ecojay SmartZone PCB, beyond what is functionally necessary.

Printed Circuit Board (PCB) - Back

“ WOLFWO “

Ecojay SmartZone®



The copper trace routing on the WolfWo PCB mirrors the Ecojay SmartZone PCB in path geometry, spacing, and routing patterns that are not dictated by functional or electrical requirements, indicating direct copying of the copyrighted PCB layout.

The WolfWo enclosure matches the Ecojay SmartZone enclosure in overall form, proportions, surface geometry, and placement of visible elements that are not dictated by functional requirements, demonstrating copying rather than independent design.

“ WOLFWO “

Ecojay SmartZone®



Enclosure BASE - FRONT

“ WOLFWO “

Ecojay SmartZone®



Enclosure LID - FRONT

“ WOLFWO “

Ecojay SmartZone®



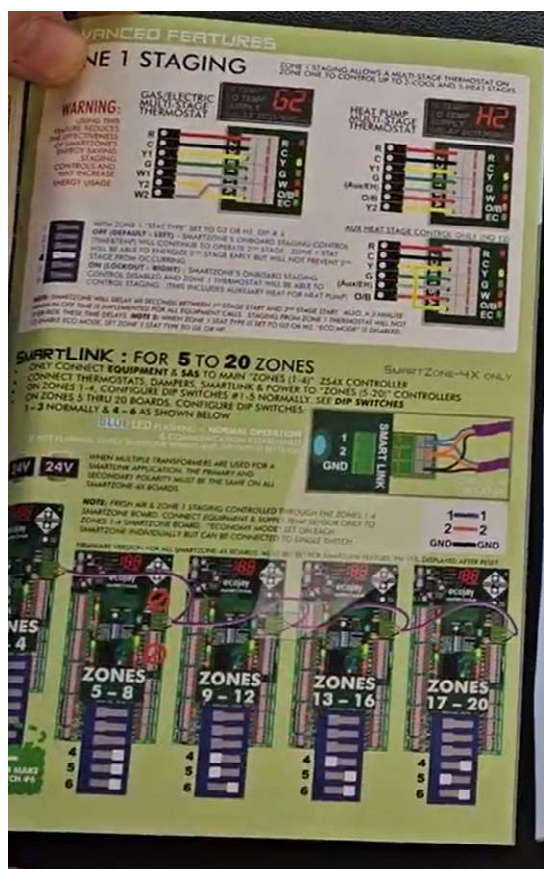
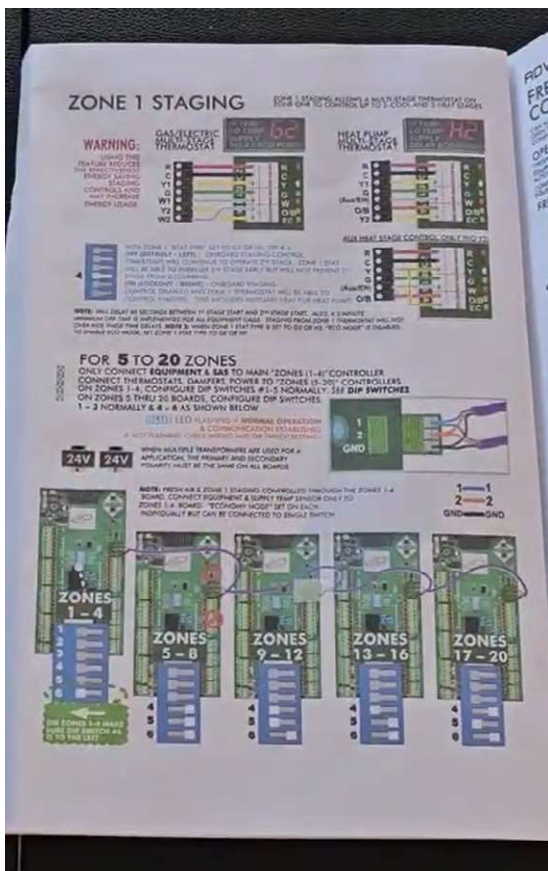
Enclosure BASE - BACK

INSTALLATION GUIDE (Included with the SmartZone product)

The WolfWo product manual reproduces Ecojay's original instructional text and diagrams with only minor cosmetic differences, indicating direct copying rather than independent creation. The following 5 pages clearly show the copying on each page of the document.

“ WOLFVO “

Ecojay SmartZone®



“ WOLFWO “

Ecojay SmartZone®

DAMPER MOTOR

APDM

USE 14-GAUGE SOLID WIRE. CONNECT COM, PO & PC TERMINALS TO ZONE CONTROLLER.

CLUTCH
PRESS THIS BUTTON TO MANUALLY ROTATE THE BLADE OF THE DAMPER.

SHAFT CLAMP
TIGHTEN TWO NUTS ATTACHED TO THE SHAFT TO REMOVE MOTOR.

MIN/MAX SETTING
MOVE TO OPEN OR CLOSE POSITION TO SET MINIMUM OR MAXIMUM AIRFLOW THROUGH THE DAMPER.

USE WITH ROUND AND RECTANGULAR BYPASS EQUIPMENT.

MODULATING BYPASS

EQUIPMENT: BLACK+COM (C) (SEE STEP 1)

DAMPER MOTOR: BLACK+COM (RED) (CLOSE)

PITOT TUBE

LOCATE AT LEAST 5 FEET DOWNSTREAM OF AIR SOURCE AS CLOSE TO CENTER OF THE AIRSTREAM AS POSSIBLE. INSERT PITOT TUBE PERPENDICULAR TO THE AIRSTREAM. DO NOT ALLOW SUPPLY AIR TO BLOW DIRECTLY INTO THE PITOT TUBE.

CONNECT THE INCLUDED WIRE TO THE NEAREST HIGH PRESSURE PILET (HPI).

- 1 MAKE A CALL FROM ALL ZONES FOR COOLING SO ALL ZONE DAMPERS ARE FULLY OPEN AND THE EQUIPMENT FAN BLOWER IS RUNNING AT THE HIGHEST SPEED.
- 2 TURN KNOB COUNTERCLOCKWISE UNTIL THE BYPASS DAMPER MOTOR STARTS CLOSING. IF DAMPER STARTS OPENING AGAIN BEFORE FULLY STOPPING, KEEP TURNING KNOB COUNTERCLOCKWISE UNTIL IT STARTS REPEAT THIS PROCESS SEVERAL TIMES.
- 3 TURN KNOB COUNTERCLOCKWISE UNTIL THE BYPASS DAMPER MOTOR STARTS CLOSING. IF DAMPER STARTS OPENING AGAIN BEFORE FULLY STOPPING, KEEP TURNING KNOB COUNTERCLOCKWISE UNTIL IT STARTS REPEAT THIS PROCESS SEVERAL TIMES.
- 4 AS SOON AS THE WEIGHT BEGINS TO MOVE DOWN, TIGHTEN THE NUTS ON THE DAMPER MOTOR SHAFT.

TEST
MAKE A COOLING CALL WITH THE SMALLEST ZONE. SINCE THE FAN IS AT ITS HIGHEST SPEED, THE BYPASS DAMPER SHOULD ROTATE WITHIN 2 MINUTES TO OPEN & RUN 1 HOUR.

DAMPER MOTOR

APDM

USE 14-GAUGE SOLID WIRE. CONNECT COM, PO & PC TERMINALS TO ZONE CONTROLLER.

CLUTCH
PRESS THIS BUTTON TO MANUALLY ROTATE THE BLADE OF THE DAMPER.

SHAFT CLAMP
TIGHTEN TWO NUTS ATTACHED TO THE SHAFT TO REMOVE MOTOR.

MIN/MAX SETTING
MOVE TO OPEN OR CLOSE POSITION TO SET MINIMUM OR MAXIMUM AIRFLOW THROUGH THE DAMPER.

USE WITH ROUND AND RECTANGULAR BYPASS EQUIPMENT.

MODULATING BYPASS

EQUIPMENT: BLACK+COM (C) (SEE STEP 1)

DAMPER MOTOR: BLACK+COM (RED) (CLOSE)

PITOT TUBE

LOCATE AT LEAST 5 FEET DOWNSTREAM OF AIR SOURCE AS CLOSE TO CENTER OF THE AIRSTREAM AS POSSIBLE. INSERT PITOT TUBE PERPENDICULAR TO THE AIRSTREAM. DO NOT ALLOW SUPPLY AIR TO BLOW DIRECTLY INTO THE PITOT TUBE.

CONNECT THE INCLUDED WIRE TO THE NEAREST HIGH PRESSURE PILET (HPI).

- 1 MAKE A CALL FROM ALL ZONES FOR COOLING SO ALL ZONE DAMPERS ARE FULLY OPEN AND THE EQUIPMENT FAN BLOWER IS RUNNING AT THE HIGHEST SPEED.
- 2 TURN KNOB COUNTERCLOCKWISE UNTIL THE BYPASS DAMPER MOTOR STARTS CLOSING. IF DAMPER STARTS OPENING AGAIN BEFORE FULLY STOPPING, KEEP TURNING KNOB COUNTERCLOCKWISE UNTIL IT STARTS REPEAT THIS PROCESS SEVERAL TIMES.
- 3 TURN KNOB COUNTERCLOCKWISE UNTIL THE BYPASS DAMPER MOTOR STARTS CLOSING. IF DAMPER STARTS OPENING AGAIN BEFORE FULLY STOPPING, KEEP TURNING KNOB COUNTERCLOCKWISE UNTIL IT STARTS REPEAT THIS PROCESS SEVERAL TIMES.
- 4 AS SOON AS THE WEIGHT BEGINS TO MOVE DOWN, TIGHTEN THE NUTS ON THE DAMPER MOTOR SHAFT.

TEST
ONCE THE FAN IS AT THE HIGHEST SPEED, THE BYPASS DAMPER SHOULD ROTATE TO AN ALMOST OPEN POSITION WITHIN 2 MINUTES TO OPEN & RUN 1 HOUR.

BYPASS SIZE	MAX CFM	EQUIP. TON	SMALL DAMPER	ROUND DAMPER	BYPASS CFM	ROUND BYPASS SIZE
2	800	2	100	6"	200-300	8"
3	1200	3	150	7"	300-450	8-9"
4	1600	4	200	8"	450-600	10"
5	2000	5	300	9"	600-900	12"
			400	10"	800-1200	14"
			600	12"	1200-1800	16"
			800	14"	1600-2000	18"
			1000	16"		

RECTANGULAR BYPASS

UNIT SIZE (RECTANGULAR) | BYPASS DAMPER

3-2.5 | 08-10"

4-3.5 | 12"

4-4.5 | 14"

5-6 | 14-16"

BAROMETRIC BYPASS

- 1 WITH BLADE CLOSED, POSITION THE "WEIGHT ARM" IN THE INITIAL POSITION SHOWN BASED ON AIRFLOW DIRECTION.
- 2 LOOSEN HEX NUTS ON THE WEIGHT ARM AT THE SHAFT AND SLIDE THE WEIGHT ARM THROUGH THE SHAFT HOLE SO THE WEIGHT IS AS FAR AWAY AS POSSIBLE FROM THE SHAFT.
- 3 MAKE A CALL FOR COOLING FROM ALL ZONES & VERIFY ALL ZONE DAMPERS ARE OPEN AND IN SPEED FAN IS RUNNING.
- 4 MOVE THE WEIGHT TOWARD THE SHAFT UNTIL AT A TIME UNTIL THE BYPASS DAMPER STARTS TO OPEN SLIGHTLY.
- 5 MOVE THE WEIGHT AWAY FROM THE SHAFT UNTIL THE BYPASS DAMPER REMAINS CLOSED WITH ALL ZONES OPEN & TIGHTEN HEX NUTS AROUND SHAFT.

TEST
MAKE A COOLING CALL WITH THE SMALLEST ZONE. SINCE THE FAN IS AT ITS HIGHEST SPEED, THE BYPASS DAMPER SHOULD ROTATE TO AN "ALMOST" OPEN POSITION. NOTE: BAROMETRIC BYPASS WILL NOT EVER FULLY OPEN.

BYPASS SIZE	MAX CFM	EQUIP. TON	SMALL DAMPER	ROUND DAMPER	BYPASS CFM	ROUND BYPASS SIZE
2	800	2	100	6"	200-300	8"
3	1200	3	150	7"	300-450	8-9"
4	1600	4	200	8"	450-600	10"
5	2000	5	300	9"	600-900	12"
			400	10"	800-1200	14"
			600	12"	1200-1800	16"
			800	14"	1600-2000	18"
			1000	16"		

RECTANGULAR BYPASS

UNIT SIZE (RECTANGULAR) | BYPASS DAMPER

3-2.5 | 08-10"

4-3.5 | 12"

4-4.5 | 14"

5-6 | 14-16"

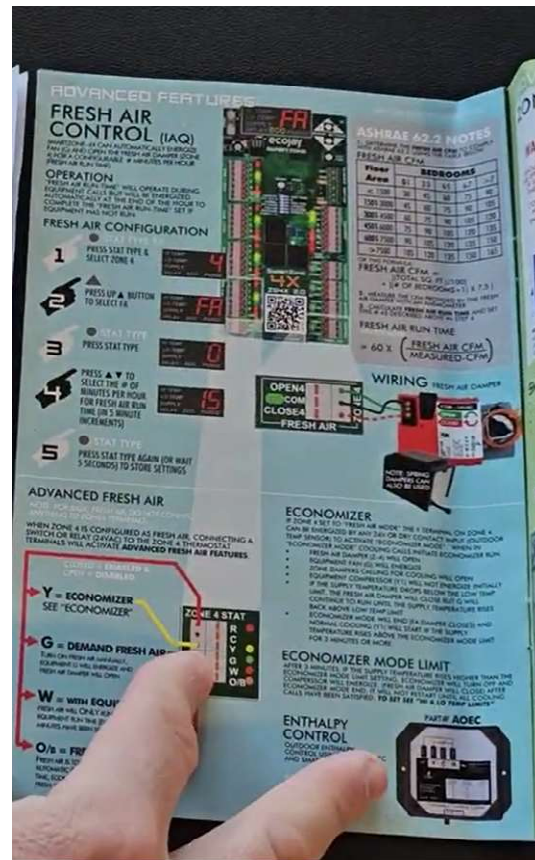
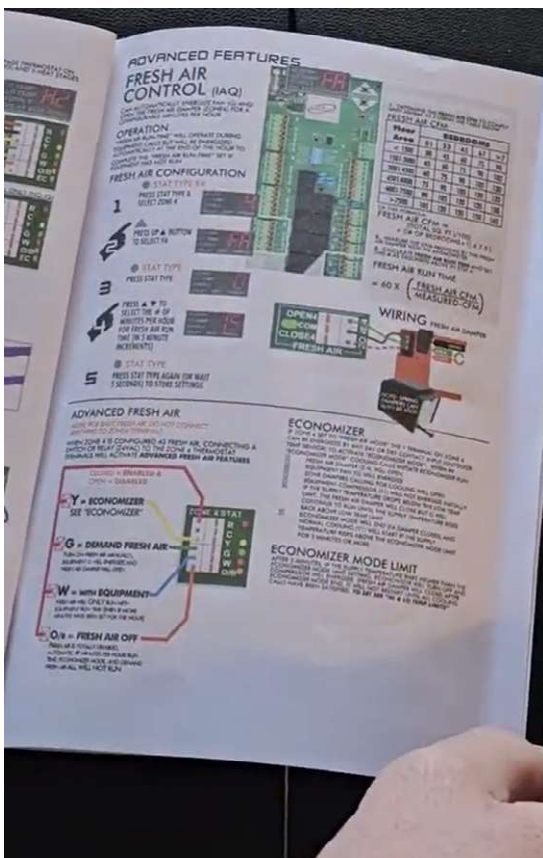
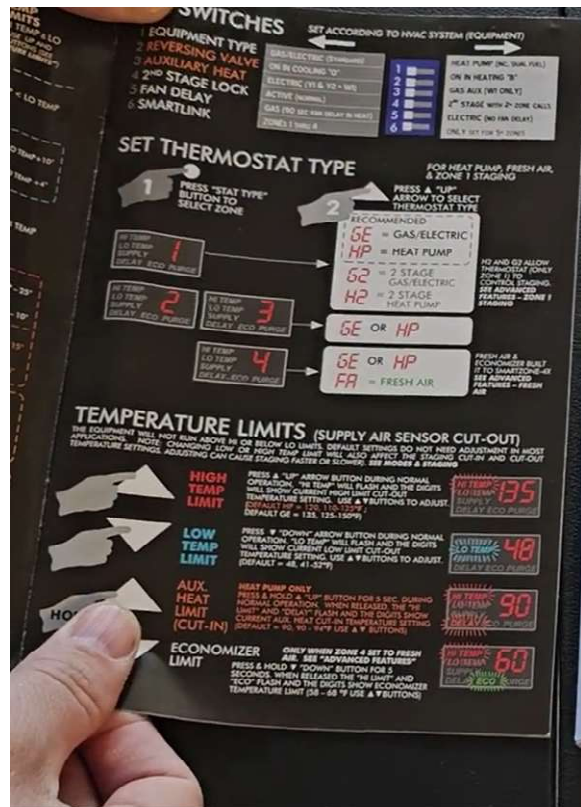
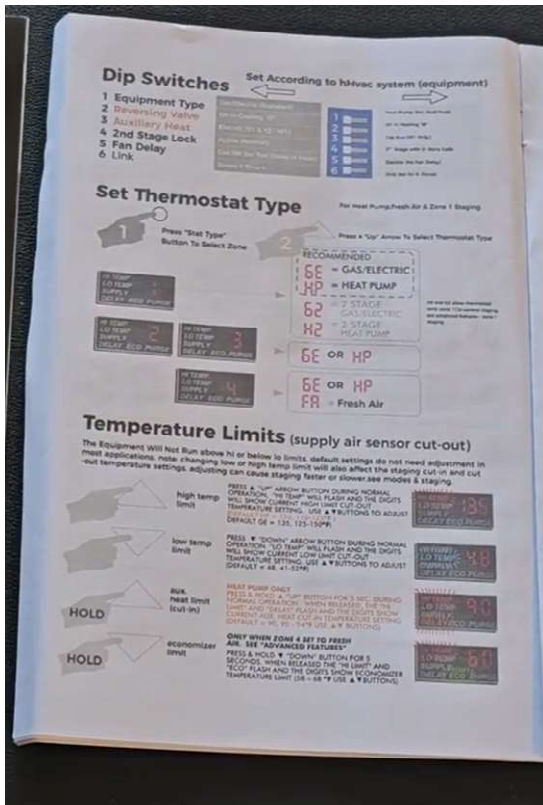
BAROMETRIC BYPASS

- 1 WITH BLADE CLOSED, POSITION THE "WEIGHT ARM" IN THE INITIAL POSITION SHOWN BASED ON AIRFLOW DIRECTION.
- 2 LOOSEN HEX NUTS ON THE WEIGHT ARM AT THE SHAFT AND SLIDE THE WEIGHT ARM THROUGH THE SHAFT HOLE SO THE WEIGHT IS AS FAR AWAY AS POSSIBLE FROM THE SHAFT.
- 3 MAKE A CALL FOR COOLING FROM ALL ZONES & VERIFY ALL ZONE DAMPERS ARE OPEN AND IN SPEED FAN IS RUNNING.
- 4 MOVE THE WEIGHT TOWARD THE SHAFT UNTIL AT A TIME UNTIL THE BYPASS DAMPER STARTS TO OPEN SLIGHTLY.
- 5 MOVE THE WEIGHT AWAY FROM THE SHAFT UNTIL THE BYPASS DAMPER REMAINS CLOSED WITH ALL ZONES OPEN & TIGHTEN HEX NUTS AROUND SHAFT.

TEST
ONCE THE FAN IS AT THE HIGHEST SPEED, THE BYPASS DAMPER SHOULD ROTATE TO AN "ALMOST" OPEN POSITION. NOTE: BAROMETRIC BYPASS WILL NOT EVER FULLY OPEN.

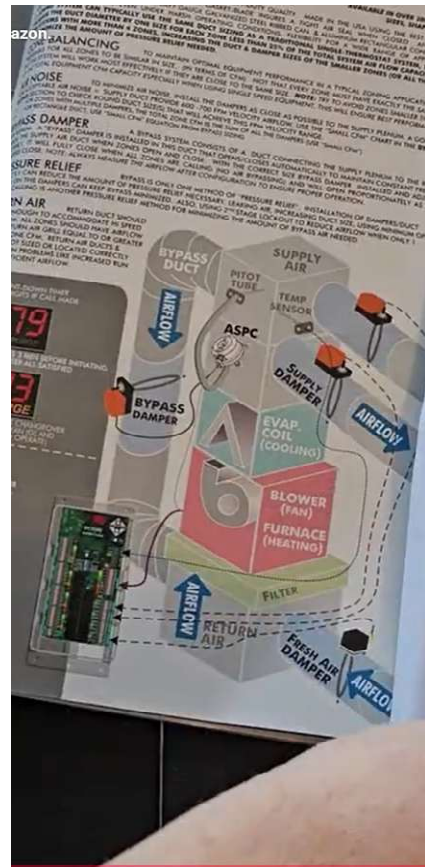
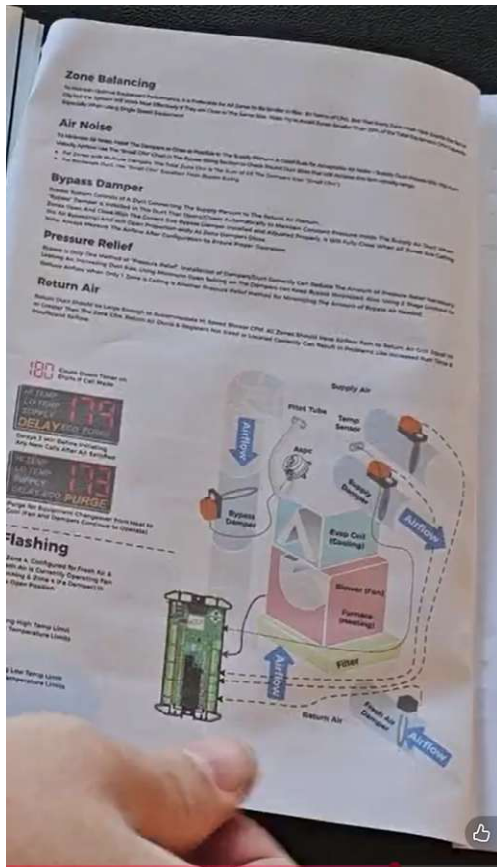
“WOLFWO”

Ecojay SmartZone®



“ WOLFWO “

Ecojay SmartZone®



“WOLFWO”

Ecojay SmartZone®

Modes & Staging

Mode	Equipment Output	Stage Timing	Stage Timing
Fan (Only)	Y1, Y2, G, W1, W2, EH	Line Start Time + 8 min	Line Start Time + 8 min
Cooling (1 st Stage)	Y1, Y2, G, W1, W2, EH	8 min	Cut In: Supply Temp + 10 Temp
Cooling (2 nd Stage)	Y1, Y2, G, W1, W2, EH	8 min	Cut In: Supply Temp + 10 Temp
Heating (1 st Stage)	Y1, Y2, G, W1, W2, EH	8 min	Cut In: Supply Temp + 10 Temp
Heating (2 nd Stage)	Y1, Y2, G, W1, W2, EH	4 min	Cut In: Supply Temp + 10 Temp
Auxiliary Heat	Y1, Y2, G, W1, W2, EH	2 min	Cut In: Supply Temp + 10 Temp
Emergency Heat	Y1, Y2, G, W1, W2, EH	3 min	Cut In: Supply Temp + 10 Temp

Purge / Changeover

Delay

MODES & STAGING

Mode	Equipment Output	Stage Timing	Temp Limits
FAN (ONLY)	Y1, Y2, G, W1, W2, EH	8 min	CUT OFF: SUPPLY TEMP < 10 TEMP
COOLING (1 st STAGE)	Y1, Y2, G, W1, W2, EH	8 min	CUT IN: SUPPLY TEMP > 10 TEMP
COOLING (2 nd STAGE)	Y1, Y2, G, W1, W2, EH	8 min	CUT IN: SUPPLY TEMP > 10 TEMP
HEATING (1 st STAGE)	Y1, Y2, G, W1, W2, EH	8 min	CUT OFF: SUPPLY TEMP > 10 TEMP
HEATING (2 nd STAGE)	Y1, Y2, G, W1, W2, EH	4 min	CUT OFF: SUPPLY TEMP > 10 TEMP
AUXILIARY HEAT	Y1, Y2, G, W1, W2, EH	2 min	CUT IN: SUPPLY TEMP < 10 TEMP
EMERGENCY HEAT	Y1, Y2, G, W1, W2, EH	3 min	CUT IN: SUPPLY TEMP < 10 TEMP

PURGE / CHANGEOVER

Problem investigation

Symptom

Possible Cause

Specifications

12Vdc Max (375 Ma @ 24Vdc) (2x 12Vdc x 24Vdc x 24Vdc, 5x1)

Display

Thermostats

Supply Temperature

TROUBLESHOOTING

SYNOPSIS

POSSIBLE CAUSE

SMARTZONE SPECIFICATIONS

SmartZone-2X / SmartZone-4X

PROTECTION

EQUIPMENT

DAMPERS

SMARTLINK

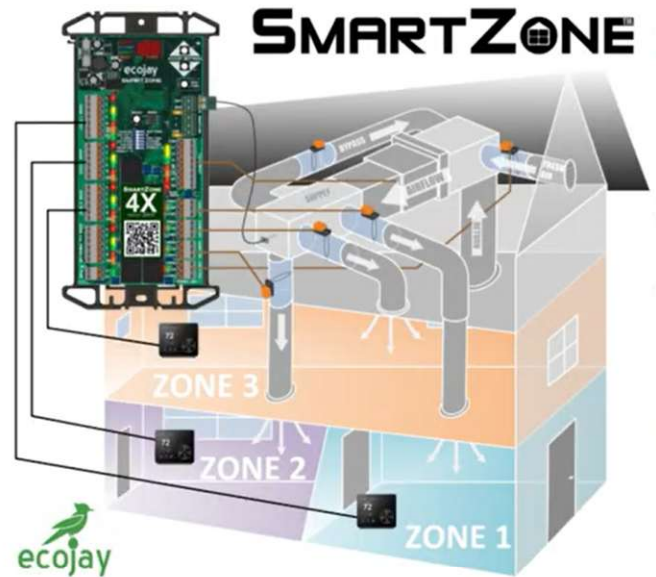
THERMOSTATS

SUPPLY TEMPERATURE

4x by "Wolfwo" being sold on Amazon.

“ WOLFWO “

Ecojay SmartZone®



The comparisons in this document demonstrate repeated unauthorized reproduction of Ecojay’s copyrighted visual and expressive works. These similarities are not the result of functional requirements or industry standards, but of direct copying.